

HANDBOOK

T5 SOFTLIGHTS FIXTURES

CLASSIC / LONG-ONE / MEDIUM / SMALL

WiFi  SERIES



*Soft
lights*

HANDBOOK
T5 SOFTLIGHTS FIXTURES
CLASSIC / LONG-ONE / MEDIUM / SMALL

INDEX

GENERALITIES.....p. 3
 features
 presentation

STARTING GUIDE.....p. 4
 fixing the mounting plate
 fluorescent tubes installation
 connecting to mains

MANUAL CONTROL.....p. 5
 control panel
 getting started
 dimmer
 reset
 troubleshooting

MULTI CIRCUITS.....p. 7
 introduction
 multi-circuits configuration

DMX CONTROL.....p. 9
 connection
 addressing

WI-FI CONTROL.....p. 10
 introduction
 possibilities
 preparation
 using wi-lights software
 control of one fixture
 circuits configuration
 control of multiple devices
 renaming fixtures
 multi-circuits mode
 group of fixtures
 dmx addressing
 settings back-up

INSTALLATION AND ACCESSORIES.....p. 17
 installation methods
 spigots
 accessories

SAFETY WARNINGSp. 18

GENERALITIES

FEATURES

The Softlights fixture in your possession meets EN 60598-2-17 standards:
"Fixtures for lighting theatre stages television studios, film and photography "

The plate on the back of the unit contains the following informations:

Model: Class 1

Max voltage: 260V

Maximum power: 280 W

Degree of protection IP 0

Maximum allowable temperature 50 ° C ambient

Maximum temperature of the cap of a tube 90 ° C

Minimum distance from all combustible surfaces: 50 cm



The device can be used in all positions.

Downloadable Handbook and declaration of Conformity - see www.softlights.com

Origin: Made

Manufacturer : SOFTLIGHTS

Adress : 25 rue du Château-Landon 75010 Paris France

tel : 33 (0)1 44 72 80 00 <http://www.softlights.com>

PRESENTATION

The T5 Softlights fixtures range offers numerous and often new ways to control the settings of the light.

Specifications

-Three different controls:

-Local manual control on the fixture itself

-Wired Remote Control by DMX

-Wireless remote control via Wi-Fi

-Independent adjustment of each ballast

-Ability to assign DMX addresses of your choice even for each circuit

-Automatic memory storage every 10 seconds of all the settings (Dimmer circuit configuration, DMX addresses). The fixture can thus be powered down either voluntarily or not, and return to the last settings when it is turned back on.

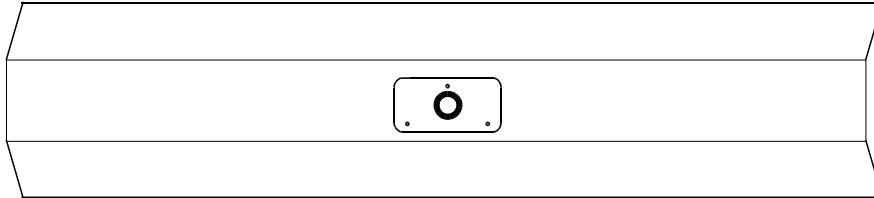
-In Wi-Fi mode, ability to bundle multiple devices to have a single fader for all. Or if each unit is equipped with Daylight and Tungsten tubes a single fader for all Daylight tubes and another one for all Tungsten tubes.

-Saving of the settings and configurations of one or more fixtures when in Wi-Fi mode.

STARTING GUIDE

FIXING THE MOUNTING PLATE

On the back of the fixture install the mounting plate using the 3 screws M5x12 and the provided Allen key in the corresponding threaded holes.

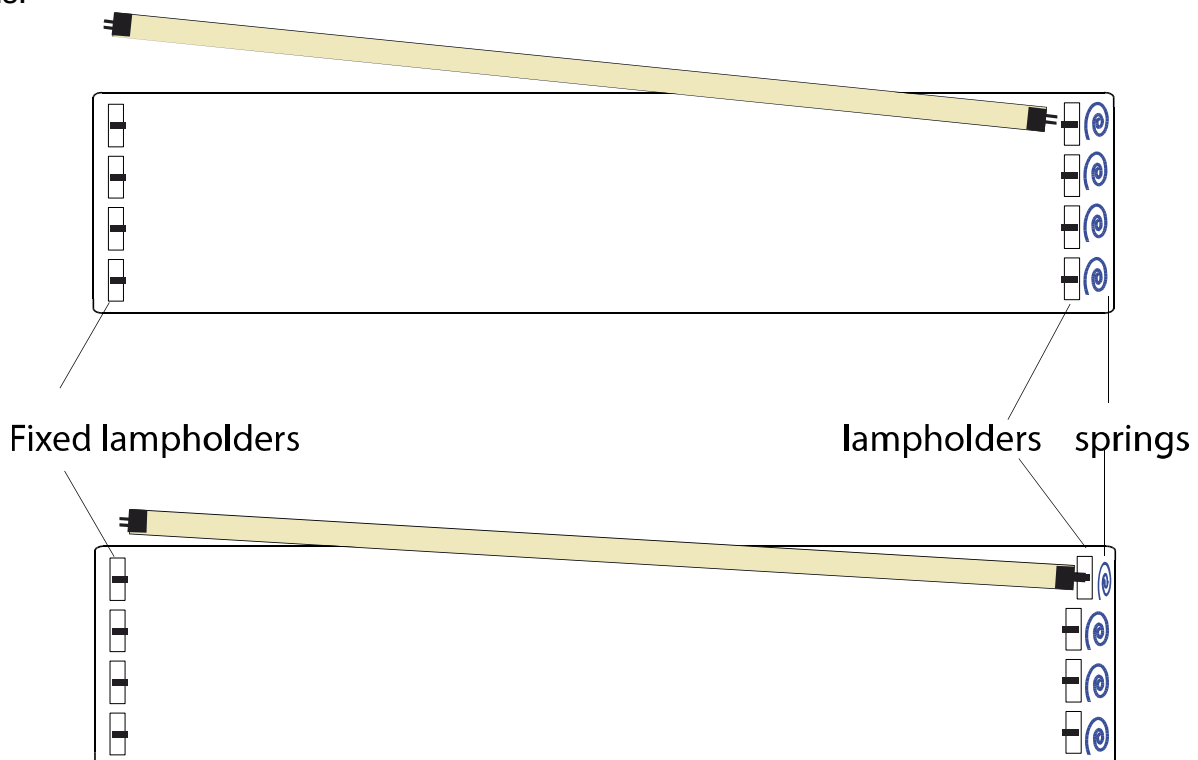


FLUORESCENT TUBES INSTALLATION

It is recommended to use only Softlights tubes. They are equipped with a protection sheath and provide optimum quality of light

On delivery the tubes are not installed on the fixture.

On one side of the device the lamp holders are fitted with a spring, on the other side they are fixed. Insert one end of the tube into the lamp holders fitted with a spring, sliding tube pins into the slots of the socket. Push gently the tube in the socket to press the spring. Insert the other end of the tube into the fixed lamp holders. Then rotate the tube a quarter turn with both hands.

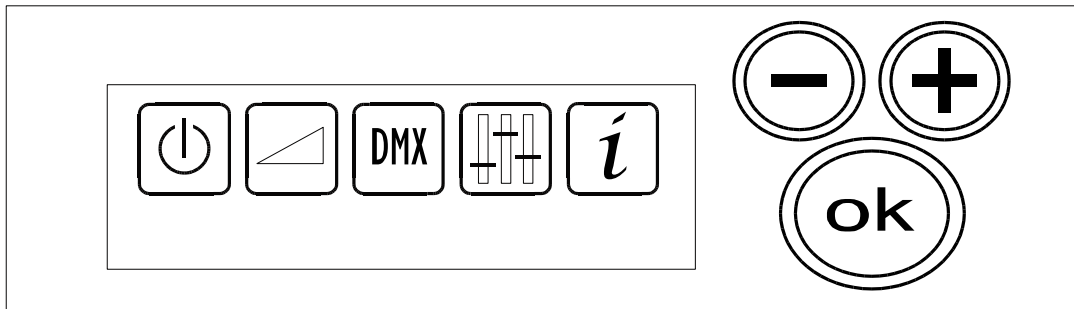


CONNECTING TO MAINS

Connect the power cable on the fixture and then to the 220V AC Mains. Make sure the 220V AC Mains are grounded for maximum protection of both user and projector.

MANUAL CONTROL

CONTROL PANEL

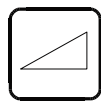


The screen lights up.

It includes five menus:



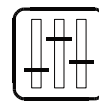
ON/OFF



DIMMER



DMX



CIRCUITS



INFO

It has 2 buttons to go from one menu to another as well as from one option to another in each menu . With the OK button you can go inside a menu or confirm the selected option and return to the previous level.

GETTING STARTED

The fixture has no power switch.

Go to the menu using the buttons Get into the menu pressing OK and select ON using

The tubes light up. Press OK to return to the menus.

N.B. To turn off, unplug the cable from the fixture, so you will keep in data memory the last Dimmer settings.

The OFF in the menu can be used to turn off but the dimmer setting will be lost.

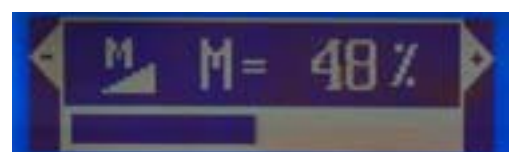
DIMMER

Select the Dimmer menu using . The words "Dimmer Master" should appear. Otherwise see the RESET part.



Press OK to enter this menu.

Using the + and - buttons, set the Master level of the Dimmer. Press OK to return to the menus.



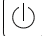
RESET

To go back to the basic settings of the fixture and be sure it is not in Multi-Circuits Mode (see MULTI-CIRCUITS) go to the Circuits menu. Press OK to get into the menu and make sure the option M (unique master) is selected.



Otherwise select M using the + and - in the Circuits menu and click OK.



Then go back to the menu . Go into the menu using the OK button. In the ON / OFF options go to OFF then to ON. All circuits will be switched on and the dimmer level will be at 90% which is the optimum level for the color temperature of the tubes.

TROUBLESHOOTING

If the fixture has been previously used (rental, another technician, etc..) it may be that the settings which are automatically stored in the data memory disturb your handling and your own settings. It is advisable to go through the process of RESET.

! Warning!

Before any manipulation of the tubes or any other intervention make sure the device is disconnected from the Mains. The OFF position is not made for that, it just turns the level to 0%. Make sure the control screen is unlit.

Before connecting to Mains verify all tubes are in place and fully engaged.

A device may be damaged if one or more tubes are missing.

The tubes do not light:

Check electrical connections and put the dimmer to at least 50%

Some tubes do not light:

Go through the RESET process and verify the tubes are fitted correctly and in good position (quarter turn).

Two tubes do not light:

Please notice that the tubes are connected in pairs. One ballast powers two tubes which are not side by side (see assembly diagram). If a tube is out of order the other will not light either. You must replace, one after another, the two tubes that do not light with good tubes (preferably new or previously tested). So you determine by deduction which tube is not working. If the problem is not resolved by these manipulations a technician should be consulted.

MULTI CIRCUITS

INTRODUCTION

The diagram shows how the ballasts are connected to the tubes. A circuit drives a ballast that feeds 2 tubes. It is possible to adjust the level of each circuit independently. So by installing different tubes on each circuit (for instance tungsten and daylight which is the most common use) you can obtain very precise dimming and color temperature adjustments without having to change the tubes nor to install gelatins. You can also use some coloured tubes for other effects.

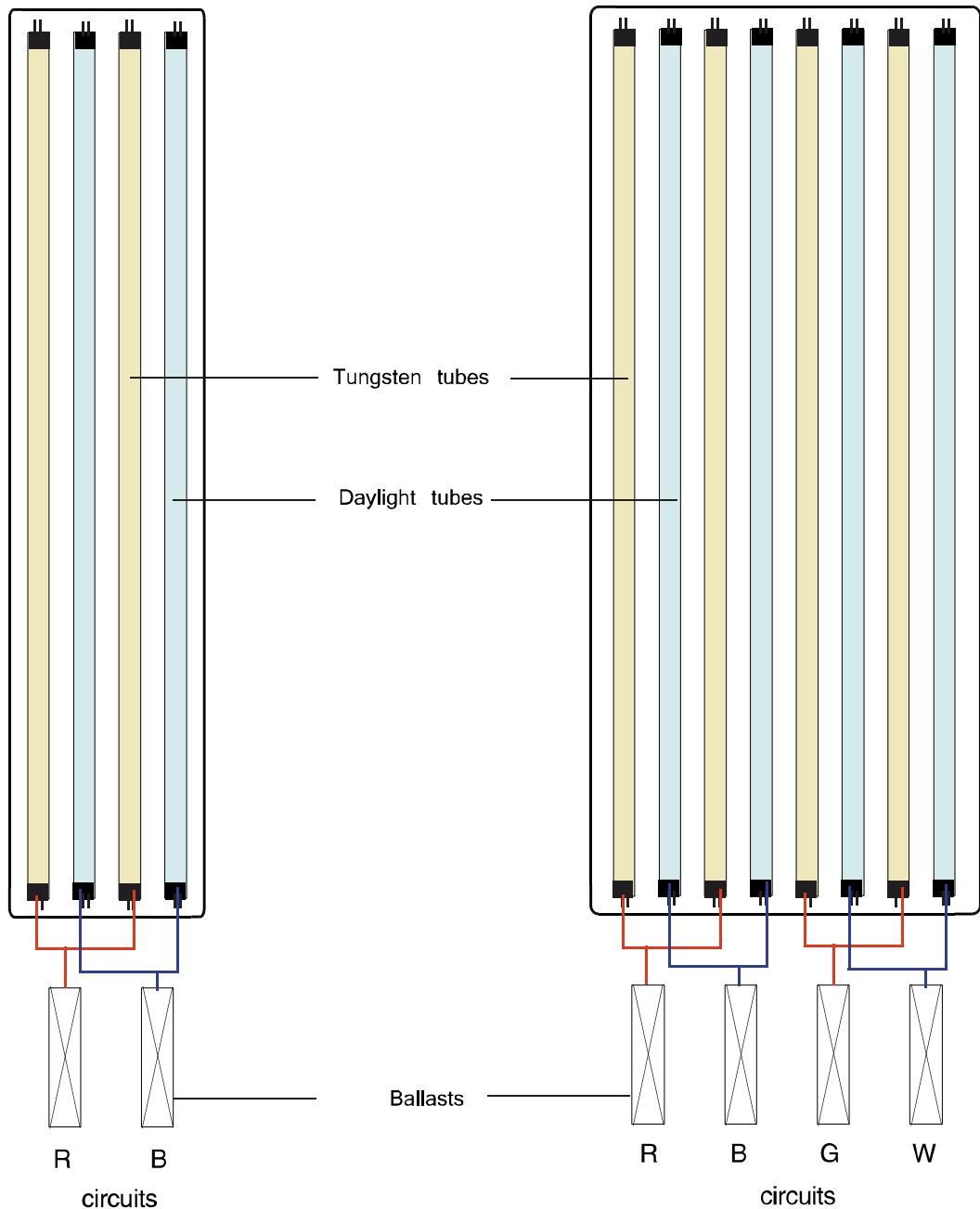
Front View

Assembly
Fixture 4 tubes / 2 ballasts

Assembly
Fixture 8 tubes / 4 ballasts

Small - Medium - Long-One

Classic



MULTI-CIRCUITS CONFIGURATION

CLASSIC (8 tubes / 4 circuits)

We have labelled the circuits RBGW for Red Blue Green White since this fixture allows this configuration among others. But it is as well very suitable for mixed Daylight / Tungsten tubes (e.g. 6 daylight tubes / 2 tungsten tubes).

Go to the Circuit menu . Press OK.

5 options are available:

M Master: all tubes are dimmed equally (basic function)

2 c: The unit is divided into 2 circuits of 4 tubes each. Each circuit is adjusted independently. There is no master dimmer.

M 2c: The unit is divided into 2 circuits of 4 tubes each. Each circuit is adjusted independently. There is a master to raise and lower the general level

4c: The unit is divided into 4 circuits of 2 tubes each. Each circuit is adjusted independently. There is no master.

M 4c: The unit is divided into 2 circuits of 4 tubes each. Each channel is adjusted independently. There is a master to raise and lower the general level.

Choose your option, press OK and go back to the Dimmer menu . The Circuits mode you are in will be indicated (e.g. M + rbgw if you chose M 4c).



Press OK to enter in the Dimmer menu. Using + and - select the circuit you want to adjust and press OK.



You have access to the dimmer of this circuit. Adjust it using + and -. Click OK. Select the following circuit and perform the same operation. Same for the master dimmer.



N.B. If the master level is on 100% and all circuits are on 40% the unit will only lights at 40%. While in simple Master mode you can get the full power of the fixture because all the circuits are then set by default to 100%.

SMALL, MEDIUM, LONG-ONE (4 tubes/2 circuits)

Same as a 8 tubes. Go to the Circuit menu . Press OK.

3 options are available:

M master : All the tubes are dimmed equally (basic function)

R+B : Each circuit is independently controlled. There is no master.

M R+B : Each circuit is independently controlled and there is a Master to raise and lower the general level.

Select your option using the + and - buttons. Press OK and return to the Dimmer menu. The Circuits mode you are in will be indicated. Press OK to enter into the dimmer. Using + and - select the circuit you want to adjust and press OK. You have access to the dimmer of this circuit. Adjust it using + and -. Click OK. Select the following circuit and perform the same operation. Same for the master dimmer.

DMX CONTROL

The fixtures are controllable by standard DMX 512. There may be incompatibilities with consoles that are not compliant to the DMX standard. Also special attention should be paid to cables, splitters and termination caps. The fixtures can manage all the addresses from 001 to 512.

CONNECTION

Connect the female 5 pins XLR plug to the male plug of the fixture (the XLR female of the fixture can connect another fixture without setting a DMX cable from the console).

The icon  indicates that the DMX signal arrives into the fixture.

ADDRESSING

In Master mode, only one DMX address is assigned. Example: dmx 001.

Using + and - go to the DMX menu . Press OK. A DMX address appears. Change it if necessary using the + and -. Click OK.

For the DMX control via console to be effective you must stay on the DMX menu. If you make changes in another menu (e.g. change the number of circuits) be sure to return to the DMX menu to regain DMX control.

If you are in a Multi-Circuits mode (see Multi-circuits), contiguous addresses are assigned to each circuit, the Master being counted as a circuit and determining the first address.

Example 1: Mode M+4c on a CLASSIC 8 tubes.

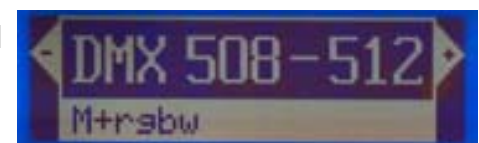
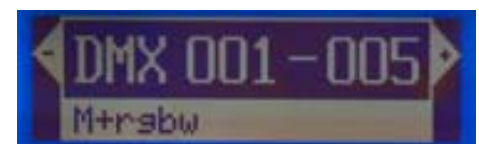
4 circuits +1 Master = 5 DMX addresses

Using + and - go to the menu DMX. Press OK to go into the menu.

A group of DMX address appears: dmx 001-005. The Master is on 001. Change the address if necessary using + and -.

The Master will always have the smallest address and the circuits the following ones.

Example: dmx 508-512 Master is on 508, the circuits are on 509,510,511,512.



Exemple 2 : Mode M R+B sur un 4 tubes (SMALL, MEDIUM, LONG-ONE)

1master +2 circuits = 3 DMX address

Using + and - go to the DMX menu . Press OK to enter the menu. A group of DMX address appears : dmx 001-003. The Master is 001. Change the addresses if necessary using + and -. The Master will always have the smallest address and the circuits the following ones. (ex dmx 031-033 Master 031, R 032, B 033).

N.B It is always possible to change the circuit configuration by going to the Circuits menu (see Multi Circuits). DMX address will be automatically redefined. Up to you to reassign them if necessary .

WI-FI CONTROL

INTRODUCTION

You can control the fixtures of the T5 range through Wi-Fi from a PC, a Mac or a Smartphone. All the functions described above in Manual Control and DMX Control are accessible via Wi-Fi. The wireless network that is created between the devices and the controller is local. It is totally independent from the Wi-Fi network for Internet and public access points. You can install the Wi-Lights control and its Wi-Fi network in a place without usual Wi-Fi coverage.

POSSIBILITES

With Control by Wi-Fi you don't need a DMX cable installation

With it you can also:

- Dim each fixture
- Determine the circuit configuration in each unit and dim each circuit
- Change the addresses of DMX controlled fixtures located in difficult places and then return to DMX control
- Create virtual groups of fixtures and dim them all together from a single fader on your screen.
- Store in memory a configuration of Levels, Circuits, Group of fixtures, DMX address, switch to other settings and return to the first configuration. Very useful when going back and forth between different scenes.

PREPARATION

The Wi-Lights software developed by Softlights is the only one that will drive our fixtures.

If you do not have a controller provided by Softlights (PC, Mac or smartphone) you can install Wi-Lights on your personal computer. To do so, you must apply by e-mail to info@softlights.com specifying the hardware you will use. The software will be sent free by return e-mail in a compressed file with a specific manual for an installation on your system.

IPhones are a special category and do not allow all the functions of Wi-Lights. (Ask Softlights for details).

N.B. Configure your computer in a Wi-Fi Ad-hoc local network mode.

USING WI-LIGHTS SOFTWARE

Given the numerous possibilities offered by Wi-Lights we advise you to study the MANUAL CONTROL part. The same operations are used in Wi-Fi Control and they will often be recalled. It is recommended to follow the first steps outlined below to get used to the Wi-Fi Control.

CONTROL OF ONE FIXTURE

Verify that your fixture is connected to the 220 V (screen lit).

On the control panel of the fixture make sure the circuits configuration is in M mode (unique master). If not go through the process described in the RESET part of MANUAL CONTROL. So you will start with the simplest operations.

Launch Wi-Lights. The fixture is automatically detected by the application and its name appears on the screen. This name is the same as the one appearing in the INFO menu of the control panel located on the fixture.

Fig 1

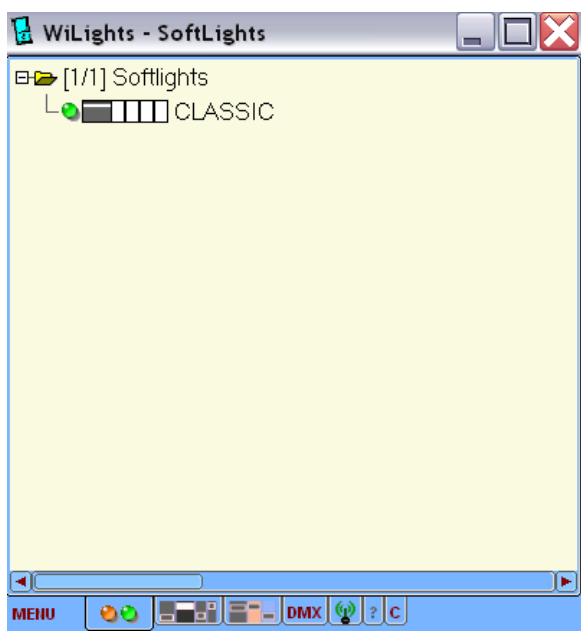
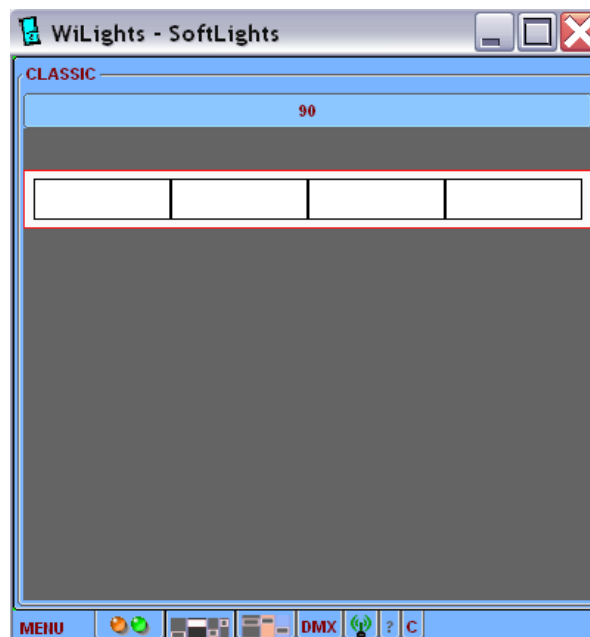


Fig 2



Menu Liste Masters Channels DMX

At the bottom of the window click on the Master tab [Fig.1]. A Fader is shown. You can move it to vary the dimmer [Fig.2].

Please note that any variation on your computer screen will be visible in the Dimmer menu of the control panel of the fixture. Similarly, if you vary the dimmer on the control panel of the fixture, the fader follows the variation on the screen of your computer. It is the same with other modifications studied further such as switching to Multi Circuits, dimming of each circuit and DMX addressing .

Note that you switch from Manual control to Wi-Fi control very easily.

CIRCUITS CONFIGURATION

In the Menu tab click channels [Fig.3]. You can find the same options as in Multi Circuits of Manual Control above.

Choose M + RB (2 circuits + 1 master).



Fig.3



Fig.4

Go to the Channels tab [Fig.4]. The faders of the 2 circuits and of the Master appear. You can move them independently and follow the variations of light on your fixture. Same for M+RGBW

CONTROL OF MULTIPLE DEVICES

Now if you connect other fixtures, they will appear after a few seconds in the window of the List tab [Fig.5].

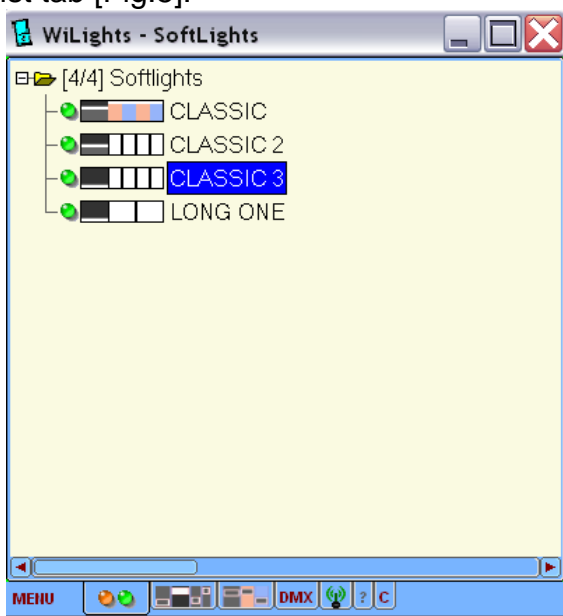


Fig.5

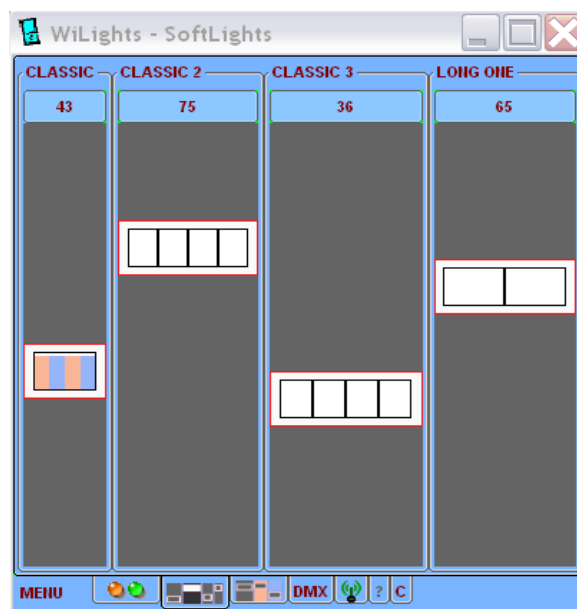


Fig.6

Going to the Masters tab, all the Masters faders of the fixtures are displayed [Fig.6]. In each fader is a little icon showing the multi circuit mode assigned to the fixture. You can move the faders and vary the light of each fixture one by one.

N.B.if they do not appear go to the Menu tab and then click resync.

The wireless network is reset and detects all connected fixtures.

RENAMING FIXTURES

At this stage it may be necessary to differentiate the fixtures by giving them a specific name like Classic-contre, etc. Classic-porte .. To do this go to the List window, select the fixture to be renamed, then go to menu>> edit>> rename [Fig.7] enter the new name, click OK [Fig.8]. Repeat for each fixture.

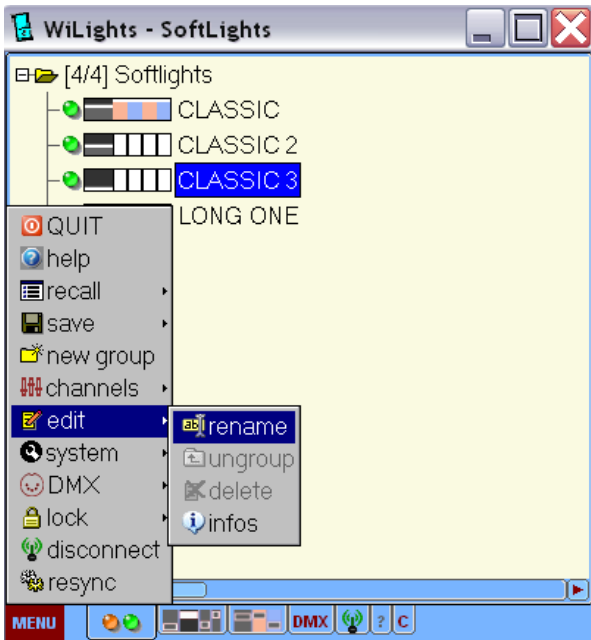


Fig.7

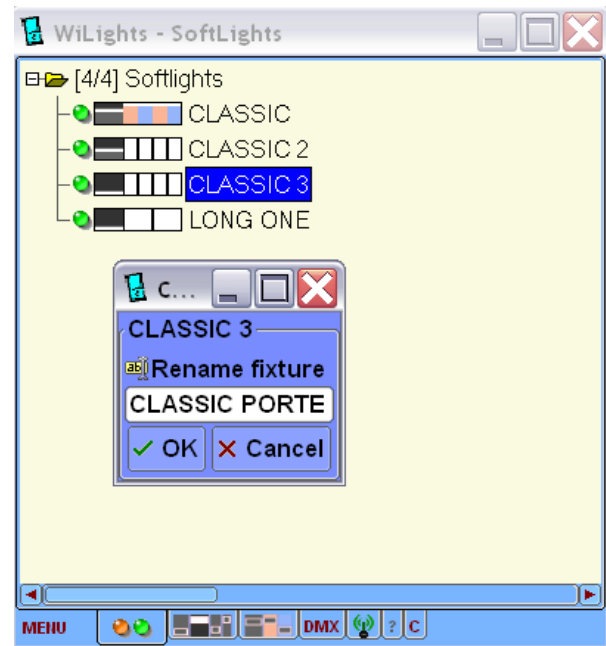


Fig.8

MULTI-CIRCUITS MODE

Now you can go to the Channels tab and scroll through the names of the fixtures on the top of the page [fig.9]. Those in Master Mode have a single fader. Those in a Multi-circuits Mode have several faders that you can vary[fig.10]. To change the circuits configuration go to Menu>> channels. The same options as in the Circuits menu of the Control panel are available. Select the new mode. Immediately, changes will appear in the Channels window.

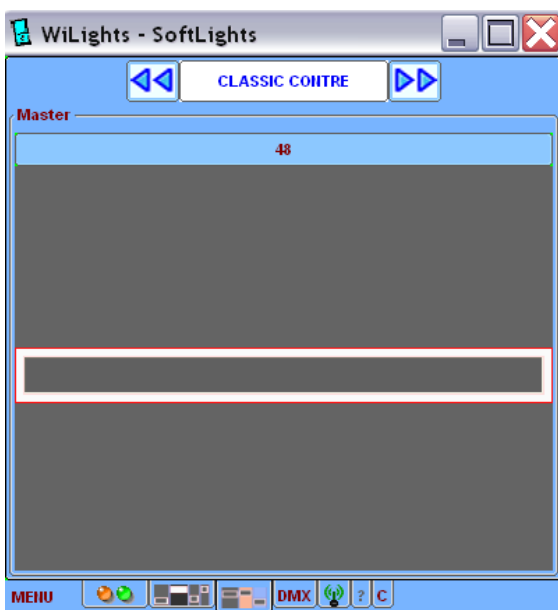


Fig.9

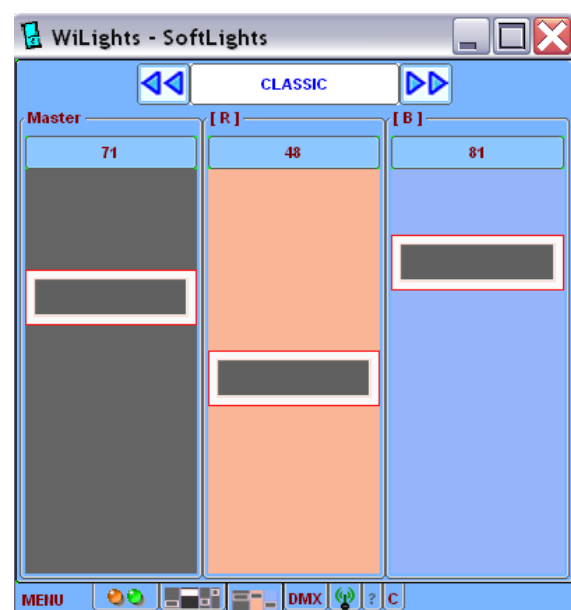


Fig.10

GROUP OF FIXTURES

Once the fixtures are adjusted it is possible to group them virtually and vary them together from a single master fader.

Open the Menu tab. Click on new group [Fig.11]. Enter the name that you want to assign to the group. Click OK. In the tab list the group name appears at the same level as the fixtures[Fig.12]. Drag and drop the names of the fixtures to be grouped on the name of the group [Fig.13].

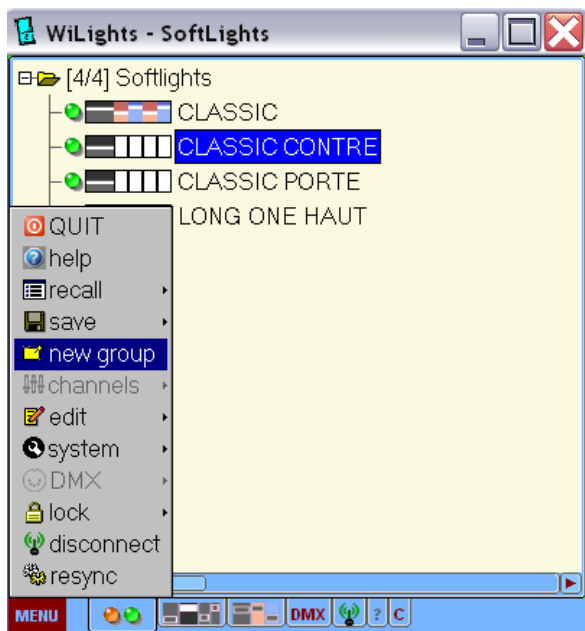


Fig.11

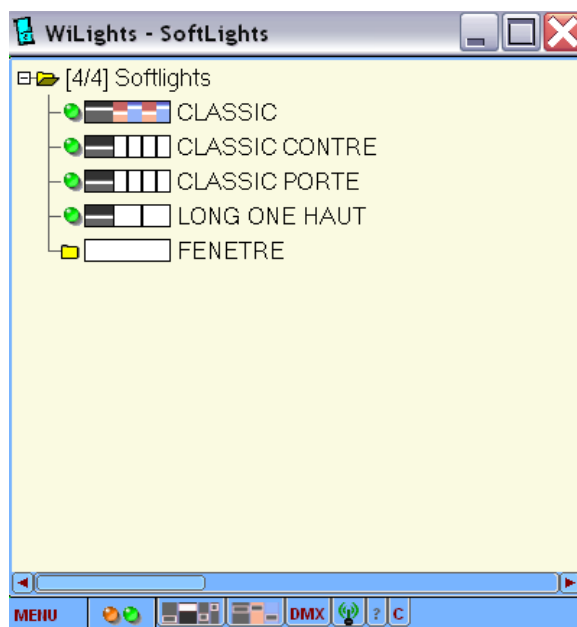


Fig.12

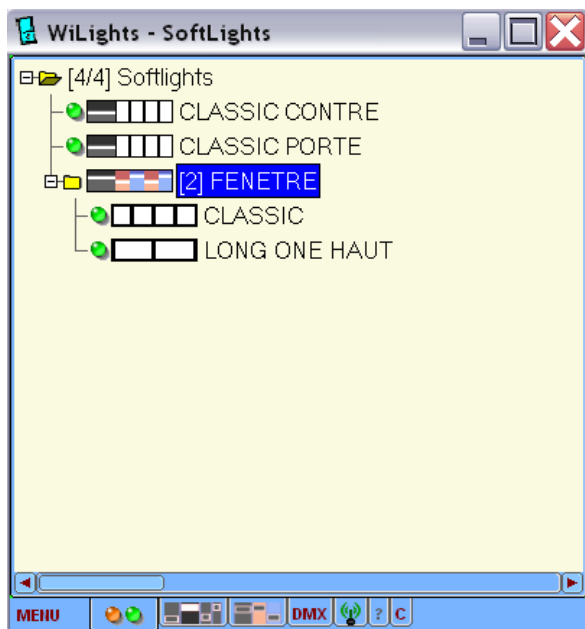


Fig.13

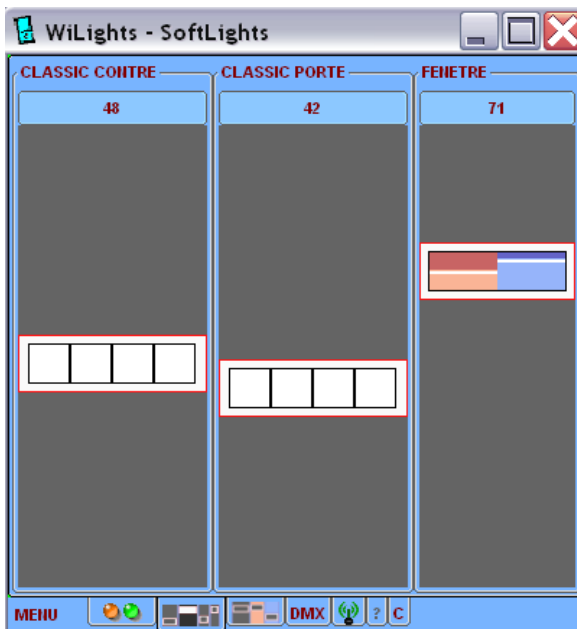


Fig.14

In the Master window, the fader of the group that can vary all the fixtures in a single movement is displayed [Fig.14].

To change the settings of a fixture that is in a group go to the List tab and drag the fixture out of the group. So you can change various settings by the methods described above, then group the fixtures back. If all the fixtures in a group have the same multi-circuits mode you can vary with a single fader all the circuits that have the same name (r, g, b or w).

DMX ADDRESSING

At the top of the page of the DMX tab scroll the names of fixtures or groups if any, using the arrows. Select the fixture you want to assign a DMX address to. Click on the DMX OFF tag. In the DMX ON page that opens you can change the DMX addresses by the + and - arrows [Fig.16] (see DMX CONTROL). You can also change the configuration of the circuits in this window [Fig.17]. The faders with DMX ON don't appear any longer on the pages Masters since a DMX console is in control. But it is still possible to change the DMX address. Fixtures with DMX on are indicated in the List tab [Fig.18].

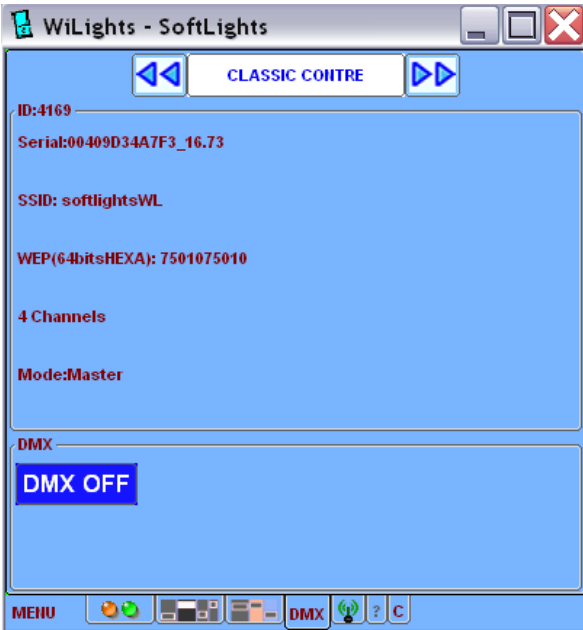


Fig.15



Fig.16



Fig.17

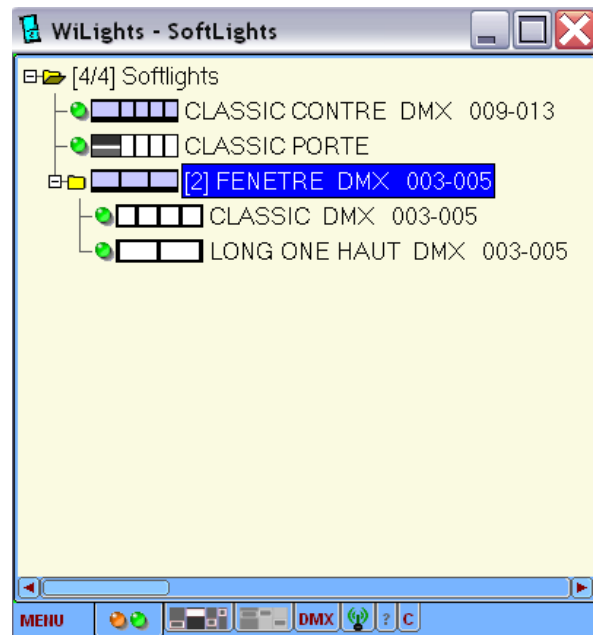


Fig.18

SETTINGS BACK-UP

To preserve the setting parameters of the light of a certain scene (levels, circuits, equipment groups, DMX address) go to Menu>> save>> preset # x.
Choose your preset number by clicking on it [Fig.19].

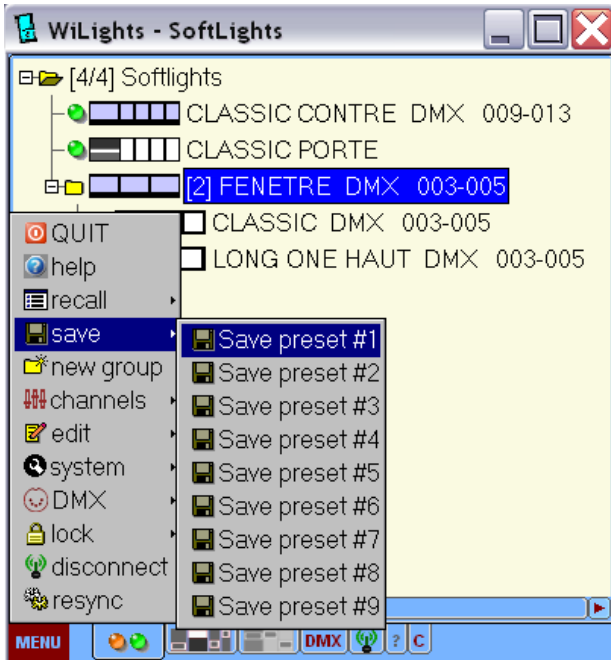


Fig.19

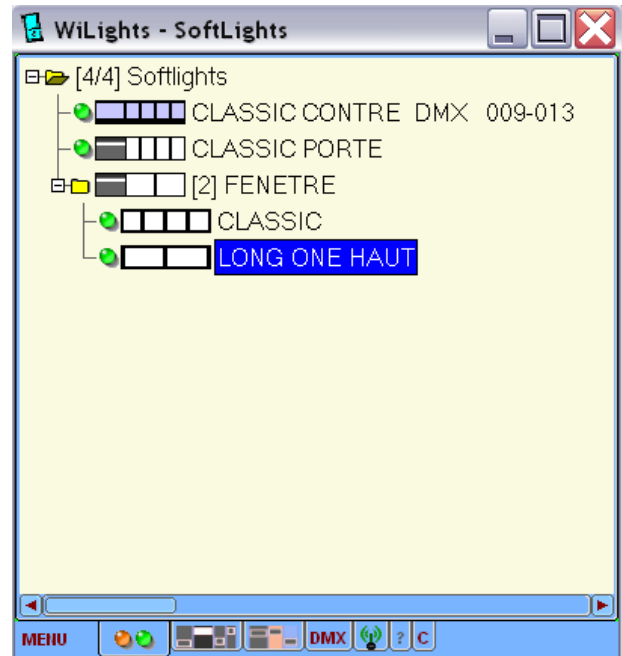


Fig.20

Now change your settings [Fig.20].
In this example we deleted the DMX addressing of the group named FENETRE.

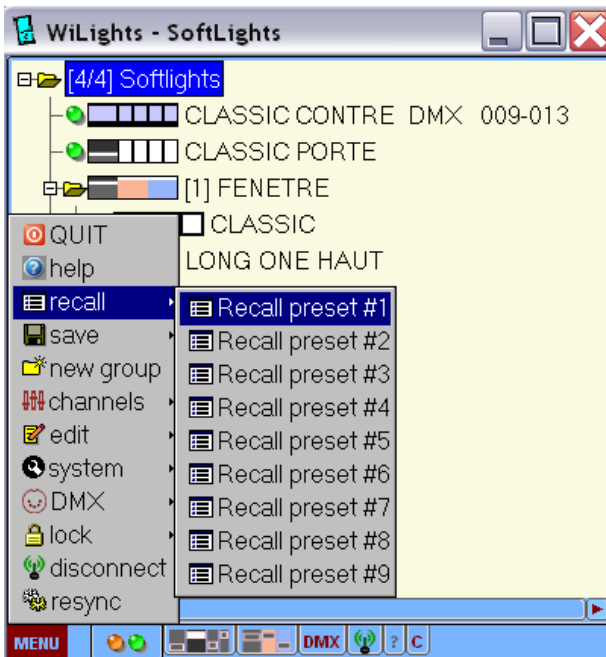


Fig.21

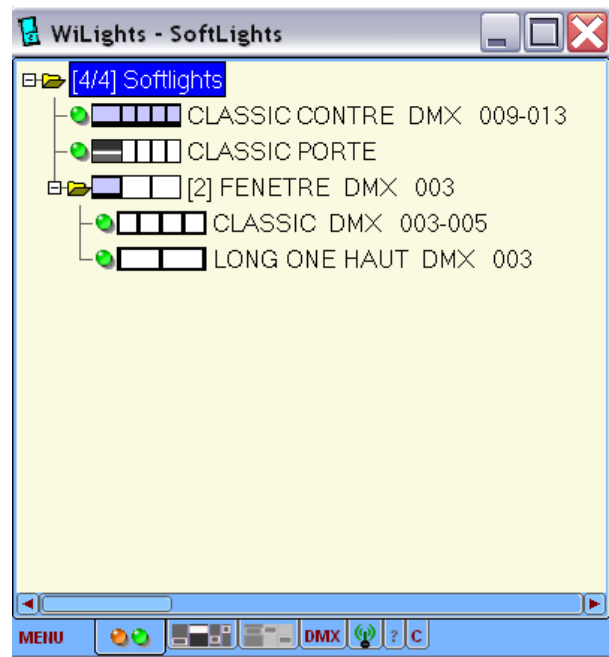


Fig.22

Then go to Menu>>recall>>preset#x [Fig.21] to go back to your previous setting. [Fig.22].

INSTALLATION AND ACCESSORIES

INSTALLATION METHODS

The Classic, the Medium and the Long-One are delivered with a mounting plate but can be equipped with a lyre (as supplementary accessory).

NB Small are only fitted with a lyre, their size does not allow to fix a plate.

The lyre may receive an adapter male or female.

All units are fitted with 10 mm threaded holes at each end to adapt a lyre. These holes can be used for another type of grip.

You can use a magic arm to install a Small or Medium.

SPIGOTS

The mounting plate on the back of the fixture is designed to receive a long spigot (16 mm diameter).

This one can be fixed in a ball-and-socket joint mounted on a tripod or on another type of grip.

NB The standard 16 mm spigots have only one flat end that fits exactly in the mounting plate.

The Softlights spigots have two flat ends.

By inserting the spigot push on the latch.

Then make sure the spigot is well fitted and the latch of the plate is back to the locked position. Screw the tightening wheel.

ACCESSORIES

The fixtures have the necessary hooks to be fitted with a honeycomb grid of the right size.



SAFETY WARNINGS

1 - Safety Instructions

- Any person involved with the installation, setting up, maintenance and handling of this product should be qualified and follow the instructions in this manual.
- This device has left our manufacturing facilities in perfect condition. To maintain this status and ensure its smooth functioning safely, the user must follow the instructions and safety warnings contained in this manual.
- Any damage caused by failure to observe these instructions will void the warranty.
- Any damage resulting from a modification in the device is not covered by warranty.
- Do not let the power cables in contact with other cables. Be cautious when handling the cables and connections, you are subject to risks of electrocution! Never touch live parts with wet hands!
- Make sure the voltage does not exceed that indicated on the nameplate of the fixture. Put the power cable only in adapted plugs.
- The plug must always be connected last. The plug must be accessible after installation of the device.
- Take care not to pinch or damage the power cable. Check the device and the power cables regularly.
- Unplug the unit when not in use and before cleaning. To do this, use the grip on the plug, never pull the cord.
- The construction of the device meets the safety standards of category I. you must therefore link it to ground. Use the cable supplied with the unit.
- The mains connection and maintenance must be performed by qualified people.

2 - Precautions

- DO NOT pour flammable liquid inside the fixture.
 - If you spill any liquid, DISCONNECT immediately from mains.
 - Stop immediately the use of this device in case of serious problems and contact your dealer as soon as possible.
 - DO NOT open the fixture, no replacement parts is stocked inside.
 - NEVER attempt to repair yourself. Repairs by unqualified people may lead to aggravation of problems, contact your nearest dealer.
 - This product has not been planned for domestic use.
 - After removing the protective packaging, check that the fixture is in excellent condition and that no trace of shock is visible.
 - The protective packaging (plastic bags, Styrofoam, staples etc. ..) MUST be stored out of reach of children.
 - This fixture is intended for use by an adult, do not leave in the hands of children.
 - DO NOT use this fixture under the rain.
 - When changing tubes, DISCONNECT the fixture from Mains.
- Beware. The unit can reach high temperatures (80 °) during operation.